

www.MORNE_JALOUX_GRENADA.COM



MORNE JALOUX

Historic Great House & Estate

GRENADA





One of the last Great Houses of Grenada

Morne Jaloux is one of Grenada's last remaining Historical Great House Estates and the location is one of the best on the island.

Built at a time when the whole island was emerging into the world of trade - the perfect location was chosen on the breathtaking Morne Jaloux ridge.

London's Kew record office show an estate and building on the Morne Jaloux site traced back to the early 1700s. The grounds are spectacular. Set in 2 acres allowing considerable freedom and privacy for the new owners with plenty of room for additional cottages to be built in the grounds as desired.

The Estate was a gift to a French Commander during French occupation of Grenada.

The commander christened his prize Morne Jaloux or 'Jealous Hill'. The backbone of the estate was a hill ridge that swept down either side into lush valleys. A combination of the rich, fertile volcanic soil and constant cooling breezes from the Tradewinds made many jealous of this fine estate.

The area is still known as Morne Jaloux in the parish of St. George. In the 18th Century this estate was owned by the Gentle family, land owners of several large estates on Grenada. The family owning between them the Woodlands Estate, the Morne Jaloux Estate and the Mount Parnassus Estate. In the early 1900s new owners commissioned George E. Gentle, a respected architect of his day, to design the house which was constructed in 1925.

Morne Jaloux's flexible format enables it to have enduring appeal. It was at one time the headquarters of Grenada's leading telecoms provider, outpost of an American University Geological Society and the Venezuelan embassy, amongst being a family home.



2 Acres of Tropical Estate Grounds

The property has a strong history of horticulture. The property covers 2 acres 104,655sq ft of fully enclosed land facing west with approx 600yds of boundary. There are 2 propagating tunnels and the gardens have new planting stock in hand.

The grounds have a rich variety of tropical fruits including :

Mandarine
Grapefruit
Tangerine
Orange
Grape
Avocado

Jack Fruit
Acki
Water Nut
Coconut
Mango
Sugar Apple

Custard Apple
Breadfruit
Bread Nut
Guava
Clove
Cinnamon



A Rich variety of tropical plants & fruting trees in the west facing grounds



Classic Historic Property

Classic historical property - built on a scale which speaks of the grandure of a past times and of a wealty plantation lifestyle. 360 views to inspire all who visit.

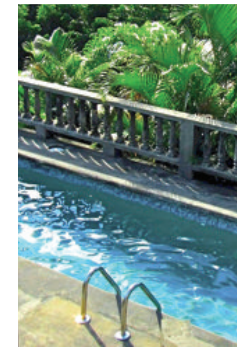
Reminiscent of an era past - the scale of the rooms is truly vast with 40 ft Great Room / Ballroom and stately formal dining and living areas, large spacious kitchen and hall areas on the main floor, with spacious bedrooms with large scale grand terraces and balconies.

Laundry & Drying Rooms are located on the lower level along with a 2nd Office space / gym or media room as preferred.

Ballroom
Dining Room
Kitchen
Office/Dressing
Phoenix Room
Peacock Room

Dragon Room
Powder Room
Hallway
Drying Room
Laundry Room
Toilet

Veranda
Hurricane shelter
or
Office / Gym /
Den
Separate Garage





Property Plan

Ballroom 10m x 9.5m with 3 x large 8 ft doors

Dining Room 7m x 6m

Veranda 36m x 2.6m

Kitchen 6m x 2.5m

Store & Shower Room 2.5m x 1m

Phoenix Room 5.5m x 6.5m

Bathroom 2.5m x 2.5m

Dressing room 5.5m x 3m

Peacock Room 7m x 4.5m

Bathroom 3m x 1.7m

Balcony 6.7m x 4.7m

Dragon Room 5m x 4m

Bathroom 4m x 1.3m

Balcony 7.3m x 5.3m

Lower Level

Laundry Room 4.2m x 2.8m

Drying Room 3.6m x 4.8m

Office / Gym space 5m x 3m

Garage 8m x 6m

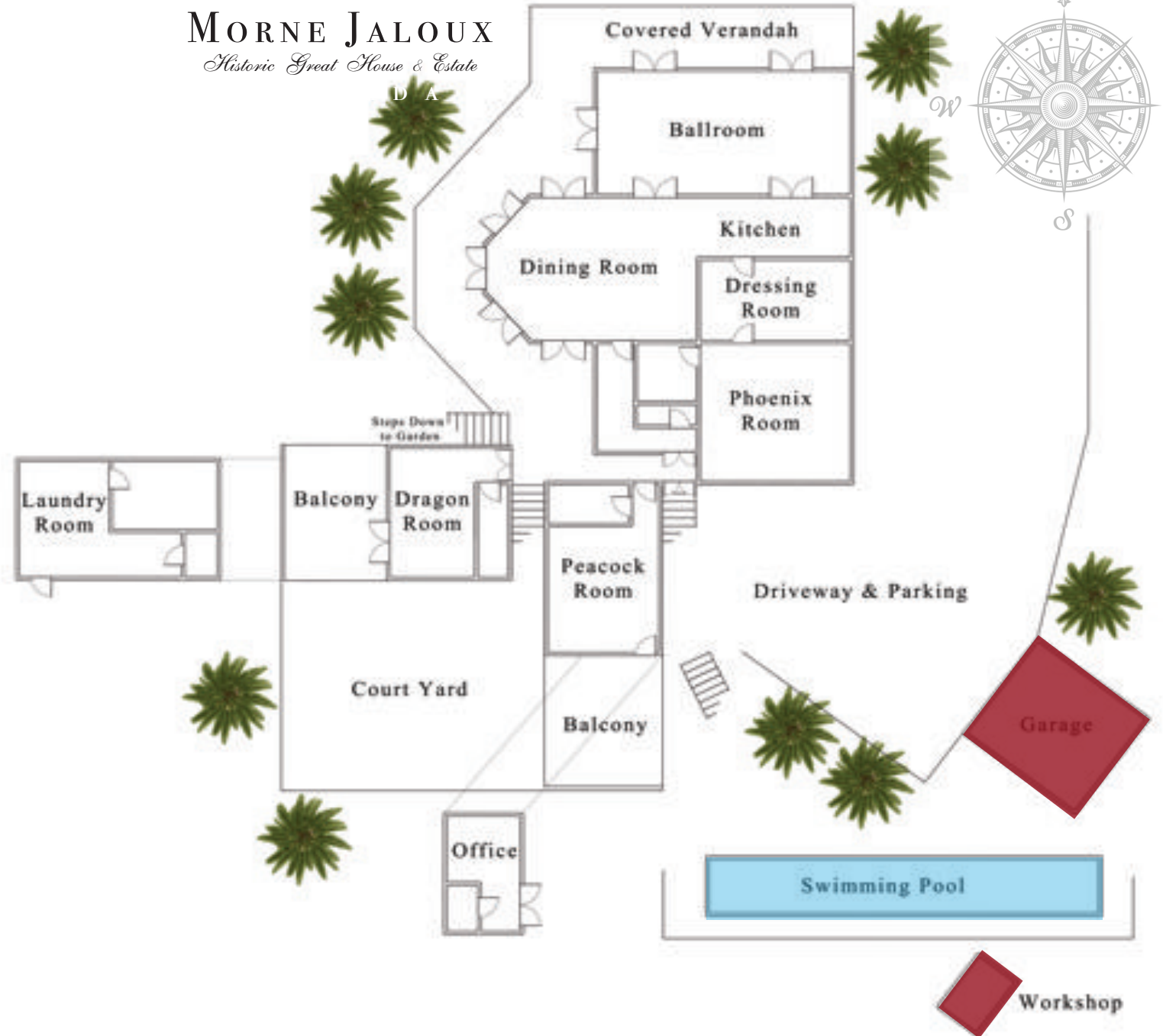
Pool 25m x 2.5m x 1.5m deep max

Workshop 2.5m x 5m



MORNE JALOUX

Historic Great House & Estate



NOTE : AREAS, MEASUREMENTS AND DISTANCES GIVEN ARE ALL APPROXIMATE.



Perfectly Placed on Grenada

10 km Airport
3 km St Georges
1 km waterfront
3 km Grand Anse Beach
4 km South coast
6 km Lance Aux Epines

National Geographic Magazine highlight Grenada :

“Grenada — Best World Trip for 2013” .

Grenada is possibly the most beautiful island In the Windwards... perhaps the entire Caribbean.

Grenada's physical beauty is complemented by its vibrant cultural heritage and rich history. It offers fun, excitement, romance and tranquility.

“Grenada - set to be one of the fastest developing tourism destinations over the next 10 years” .

Grenada has an a very active Tourism sector. Grenada is predicted by the World Travel & Tourism Council to be the fastest growing market in the Caribbean between 2011 and 2021.

The island welcomed over 116,000 visitors in 2011. Grenada handles her global touristic appeal well and enjoys ease of access with direct flights from the UK, Europe, Canada and the US.

Poised over the picturesque bay of St George’s and the Port Louis International Luxury Yacht Marina the property is perfectly placed for easy access to all Grenada’s highlights.

With 45 spectacular beaches, breathtaking mountain lakes and rainforests, fabulous diving and sailing, Grenada is truly a tropical paradise.



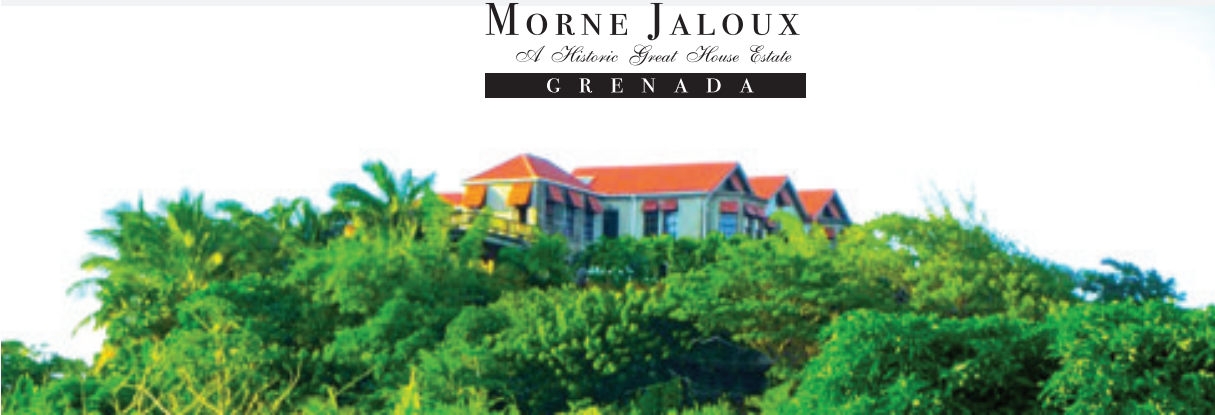
Overlooking Grenada's International Yacht Marina



MORNE JALOUX

A Historic Great House Estate

GRENADA

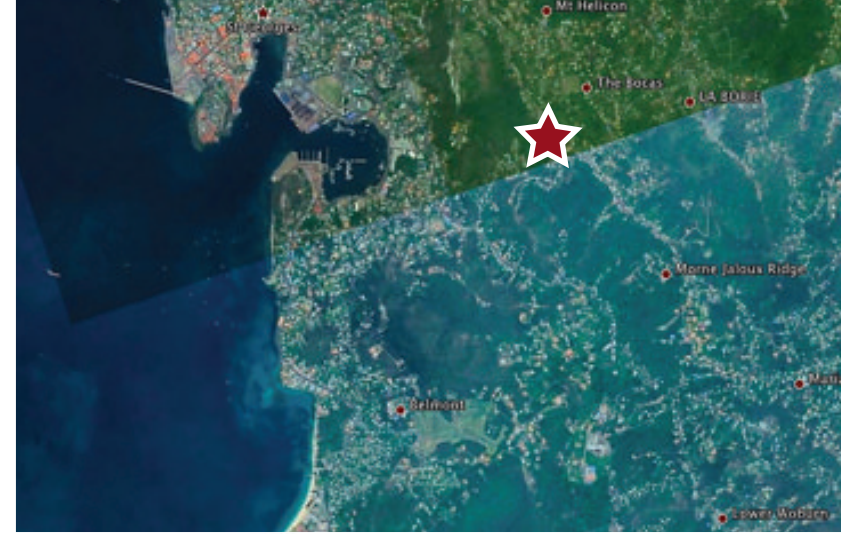


Super Yacht Marina is just 5 mins from Morne Jaloux Estate House

Morne Jaloux House & Estate enjoys ringside views over the international yachting activity below in the Carenage, Super Yacht Marinas and anchorages of St George's & Grand Anse.

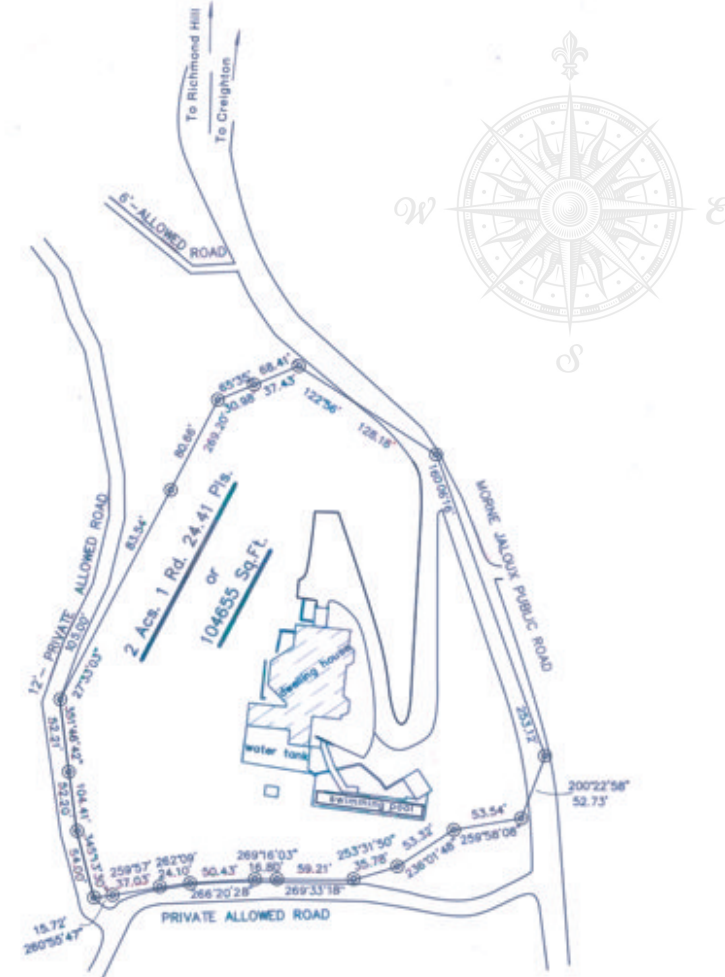
Grenada is a uniquely yacht friendly environment with the perfect climate for year round cruising and easy access to the unspoilt Grenadines. Grenada's popularity is growing among the international yachting community. Camper & Nicholsons Marinas have created Grenada's premier yachting destination Port Louis Marina to cater to the luxury yachting sector. Peter De Savary amongst others is investing now in Grenada

With over 150 berths for resident and visiting yachts, including 30 berths for super-yachts over 100 feet in length, Port Louis Marina provides full dockside facilities, shoreside bar, restaurant and pool. The island's services supporting the marinas and yachting visitors are flourishing.



Surveyed January 8th 2013

Lat 12.041938°
 Long -61.736414°




MORNE JALOUX
Historic Great House & Estate
GRENADA





MORNE JALOUX

Historic Great House & Estate

G R E N A D A



WWW.MORNEJALOUXGRENADA.COM

Contact

The Grenadines Collection

UK 0800 0484814

+1 (784) 457 3888 or +1 (784) 457 3739

thegrenadines@mac.com

www.thegrenadinescollection.com